



AUSTRALIAN STUDY LINK INSTITUTE

VOL .4

ISSUE 4, 2025



ASLI NEWSLETTER



Celebrating Our Achievements and Securing a Strong Future

As we conclude 2025, I would like to take this opportunity to sincerely thank everyone who has been part of the ASLI journey this year. Your commitment, trust, and dedication have been central to our success, and I am incredibly proud of what we have achieved together.

This year has been one of consolidation, growth, and forward momentum. It required focus, adaptability, and teamwork across all areas of the organisation. Our staff worked tirelessly to maintain quality, consistency, and a positive learning environment. Our students remained committed to their goals, showing resilience and determination even when balancing multiple responsibilities. Our education partners continued to place their confidence in ASLI, strengthening our shared vision for quality education.

One of the most significant highlights of 2025 is the confirmation that ASLI has received re-registration approval for the next 7 years. This is a major milestone for our institution. It reflects the strength of our systems, the professionalism of our team, and our ongoing commitment to delivering high-quality education and student support. This achievement belongs to every individual who has contributed to ASLI's journey past and present.

While this milestone is worth celebrating, it also brings responsibility. It motivates us to continue improving, innovating, and ensuring that ASLI remains a place where students feel supported, respected, and empowered to succeed. We are committed to building on our strong foundation and embracing opportunities for growth in the years ahead.

Looking toward 2026, I am excited about what lies ahead. We will continue to introduce new initiatives, learning sessions, and engagement activities designed to enrich the student experience. Together, we look forward to a future filled with growth, opportunity, and continued success.

Wishing you and your loved ones a Merry Christmas and a very happy New Year. Thank you for being part of the ASLI community.



Mr. Pawandeep Singh Aulakh
Chief Executive Officer

Enhancing Learning Through Support and Engagement

This year has been a positive and productive year for teaching and learning at ASLI. I sincerely thank our trainers for their professionalism, flexibility, and continued commitment to supporting students throughout their learning journey. Your dedication has played an important role in creating a structured, supportive, and engaging learning environment where students feel guided and encouraged.

It has been especially rewarding to see students grow in confidence and capability through consistent academic guidance, practical learning activities, and clear assessment support. The strong collaboration between trainers and support staff has contributed to a smooth, well-coordinated, and positive student experience throughout the year.

A key highlight of 2025 was the continued delivery of Computer Literacy and other Support sessions, which helped students strengthen their digital skills, build confidence in everyday technology use, and better engage with their studies.

Looking forward to new year, we are excited to introduce additional student support initiatives, enhanced learning engagement activities, and more educational excursions. These opportunities will continue to strengthen practical learning, real-world exposure, and student wellbeing as we support our students in achieving their goals at ASLI.

Wishing you and your loved ones a Merry Christmas and a very happy New Year. We look forward to another year of learning, growth, and success together.

Mrs. G Dhillon
Training Manager



ASLI Closing 2025 with Gratitude, Strength, and Hope

What a proud way to end 2025, with ASLI receiving re-registration approval for the next 7 years. This achievement reflects the trust in our institute, the hard work of our team, and the strong future we continue to build for our students. It has filled our campus with pride, confidence, and renewed energy. As we reflect on the year, 2025 stands out as a journey of growth, learning, celebration, and deep connection. It was a year that truly captured the spirit of ASLI resilient, inclusive, and community driven.

Learning, Progress, and Student Growth

Throughout 2025, our focus remained firmly on supporting students from the moment they commenced their studies. Regular orientations, clear communication, and consistent academic guidance helped students settle into their courses with confidence and clarity. We continued to strengthen learning engagement by working closely with trainers and support staff to ensure a structured and supportive study experience.

Student Wellbeing, Inclusion, and Care

Student wellbeing remained at the heart of everything we did in 2025. We worked hard to ensure our campus remained a safe, welcoming, and supportive space where students felt comfortable reaching out for help. Key initiatives included R U OK? Day Morning Tea, Go Blue for Autism, World Autism Awareness Day, and ongoing access to student support services and wellbeing resources. These initiatives reinforced our belief that academic success is closely linked to emotional wellbeing and a strong sense of belonging.

Campus Life, Engagement, and Celebrations

2025 was a vibrant year for campus life. Activities such as Green Dress Day, celebrating sustainability and community awareness, brought students and staff together in meaningful ways.

We also proudly shared student stories through our Shining Stars features, celebrating the diverse journeys, resilience, and achievements that define our ASLI community.

Excellence and Achievement

We were immensely proud to celebrate the outstanding achievement of our cookery trainer Ms. Shanthi Perumalpillai Jayasinghe, who represented ASLI at the 7th SICA Culinary Olympiad 2025 in India, winning 1 Gold and 2 Silver medals. Her success was a proud moment for ASLI and an inspiration for our students to pursue excellence.

A Year That Also Brought Deep Sadness

While 2025 brought many moments of pride and celebration, it was also marked by profound sadness. The passing of our former student Prabhjot Singh deeply affected the ASLI community. His loss was felt not only as an institution, but as a family. During this difficult time, our campus came together in reflection, compassion, and solidarity. It reminded us of the importance of care, safety, and looking out for one another values that remain central to who we are at ASLI.

Listening, Learning, and Improving Together

Throughout the year, student feedback played a vital role in shaping our services. Through staged feedback surveys and open communication, students shared their voices, helping us continue to improve and grow together.

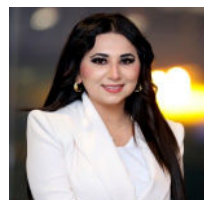
Looking Ahead with Pride

As we step into 2026, we do so with gratitude for the journey behind us and excitement for what lies ahead. We are especially looking forward to celebrating our much-awaited Graduation Ceremony in April 2026, The date and venue will be announced soon, and we look forward to celebrating this special occasion together as one ASLI community.

I would like to sincerely thank our students for their trust and perseverance, our trainers for their professionalism and dedication, and our staff for their tireless support and teamwork. Every achievement of 2025 is the result of collective effort and shared commitment.

2025 will always be remembered as a year of pride, progress, reflection, and resilience.

Wishing you and your loved ones a Merry Christmas and a very happy New Year. Thank you for your continued trust, support, and commitment to ASLI.



Ms. Roopsirat K Sekhon
Campus Manager



Important Dates for January 2026

- ⇒1: Happy New Year
- ⇒12: Orientation for January 2026 intake
- ⇒15: January intake CoE start date
- ⇒15: January fee due date
- ⇒26: Australia Day

Important Dates for February 2026

- ⇒12: Orientation for February 2026 intake
- ⇒15: February intake CoE start date
- ⇒15: February fee due date

Important Dates for March 2026

- ⇒9: Labour Day
- ⇒12: Orientation for March 2026 intake
- ⇒15: March intake CoE start date
- ⇒15: March fee due date



To our students and the entire ASLI family:

Thank you for your trust, dedication, and support throughout the year. You are the heart of our community, and together we make ASLI a place of learning, care, and connection. Wishing you and your loved ones a Merry Christmas and a very Happy New Year.

*With Love and Regards,
Team ASLI*

