



# AUSTRALIAN STUDY LINK INSTITUTE

VOL .4

ISSUE 1, 2025

## ASLI NEWSLETTER

### Thriving in Tech – Exclusive Career Advice for Aspiring IT Professionals!

Dear Students, As part of our ongoing commitment to support your academic and career success in Australia, I am pleased to share an exciting opportunity designed specifically for international students looking to build a strong career in Australia's IT industry. Study Melbourne, in collaboration with the Australian Computer Society (ACS), is hosting "Thriving in Tech" a dynamic, in-person event tailored to equip you with real-world advice, industry insights, and networking opportunities to help launch your tech career.

**Date:** Thursday, 10 April 2025

**Time:** 5:00 PM – 7:00 PM AEST

**Venue:** Study Melbourne Hub, Melbourne CBD

**Tickets:** FREE | Register here: <https://events.humanitix.com/thrivingintech/tickets>

### Why Should You Attend?

- **Expert Panel Discussion:** Gain valuable insights from top-tier IT recruiters who understand exactly what Australian employers are looking for.
- **Small Group Mentoring:** Ask questions and receive tailored career advice from industry professionals.
- **Networking Opportunities:** Connect directly with members of the Australian Computer Society, recruiters, and other international students pursuing tech careers.

**Meet the Panel of Experts:** Claudia Frändén: Senior Recruitment Consultant (Data) at Circuit | SEEK's Recruitment Consultant of the Year/ Champion of Women in STEM, Sophie Garrison: Senior Consultant at Launch Recruitment | Specialising in GRC & Cyber Security, John Riordan: Director, Technology & Contracting, Miller Leith | 15+ years in IT recruitment

At this event, you will discover how to stand out as an international job seeker in Australia's competitive IT industry. You will gain practical tips on how to start your tech career from scratch, understand the types of job opportunities available based on your visa conditions, and learn where to find the best roles in Australia's growing IT market. Whether you are just beginning or looking to level up, this session will give you the insights and tools to confidently navigate your career path.

Seats are limited, and demand is high. We encourage you to register early to secure your place.



Pawandeep Singh Aulakh  
*Chief Executive Officer*

### Stay Informed, Stay Connected!

At ASLI, we are committed to ensuring you have access to the most up-to-date student documents, including forms, policies and the student handbook etc. Here's how you can easily access them:

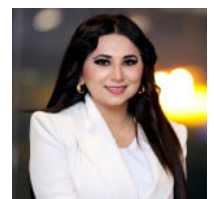
**Visit Our Campus:** Come and speak with our friendly Student Support Team at reception. We are always happy to assist you with your queries or provide you with printed copies of any documents you need.

**Access Online Anytime:** You can find all the latest documents on our website <https://asli.vic.edu.au/#>

**Email Your Request:** You can also email us at [sso@asli.vic.edu.au](mailto:sso@asli.vic.edu.au) and our team will promptly send you the requested document.

### NEW! Feedback Surveys – Your Voice Matters

In addition to our regular initial, mid-course, and completion surveys, we are excited to introduce additional feedback opportunities through our monthly newsletters. These new surveys are completely anonymous, allowing you to share your thoughts openly and honestly. Whether it's a compliment, concern, or suggestion, we genuinely want to hear from you. Your feedback plays a vital role in helping us enhance our services and create a better learning experience for all. Please take this survey . <https://www.surveymonkey.com/r/BWTD8QK> .Thank you for being an important part of the ASLI community let's continue growing, learning, and improving together.



Roopsirat K Sekhon  
*Campus Manager*

## Calling All Students: Share Your Culinary and Leadership Journey!

At ASLI, we believe in celebrating the hard work, creativity, and leadership displayed by our students both in the kitchen and beyond. To showcase your dedication and accomplishments, we are excited to announce that we have a dedicated board to display photos of our students in action whether you are working in the training kitchen, participating in culinary activities, or showing off your leadership skills at your workplace.

This is your chance to be featured on the board, sharing the progress you've made and inspiring your peers to continue pushing boundaries in both the culinary arts and leadership development.

### How to Get Involved:

Simply send us a photo of you in action! Whether you're preparing a dish, leading a team, or participating in any of activities, we want to highlight your efforts.

Please send your photos to [gulbeen@asli.vic.edu.au](mailto:gulbeen@asli.vic.edu.au) and make sure to include a brief description of the activity. This will help us provide context and tell your unique story on the board.

### Why Share Your Photos?

**Celebrate Your Journey:** Document and share your growth with the entire college community.

**Inspire Others:** Your dedication and passion can inspire fellow students to engage more deeply in their training.

**Create Memories:** It's a great way to capture the experiences that make your time at ASLI special.

We look forward to seeing you shine! Let's fill the board with your hard work, creativity, and leadership achievements.



Gulbeen Dhillon  
**Training Manager**

### **Important Dates for April 2025**

- ⇒ 10: Orientation for April 2025 intake
- ⇒ 15: April intake CoE start date
- ⇒ 15: April fee due date
- ⇒ 18 to 21: Easter Week
- ⇒ 25: Anzac day

### **Important Dates for May 2025**

- ⇒ 12: Orientation for May 2025 intake
- ⇒ 15: May intake CoE start date
- ⇒ 15: May fee due date

### **Important Dates for June 2025**

- ⇒ 09: King's Birthday
- ⇒ 12: Orientation for June 2025 intake
- ⇒ 15: June intake CoE start date
- ⇒ 15: June fee due date

## Green Dress Day: Colors of GREEN and Celebrating Sustainability and Nature

**Event Title:** Colors of GREEN

**Date:** Thursday, 13 March 2025

**Location:** Level 2, 123 Lonsdale Street, Melbourne

**Organised by:** Team ASLI

Green Dress Day was a fun and meaningful event where staff and faculty came together dressed in green to show support for nature and sustainability. The aim was to build a sense of community, promote eco-awareness, and encourage green choices in our daily lives.

Wearing green on this day is a reminder of how fashion can impact the environment. It's about making better choices like using eco-friendly fabrics, recycling clothes, and supporting sustainable brands. The day also helps raise awareness about important issues like climate change, deforestation, and protecting biodiversity.

A big thank you to everyone who joined us on short notice your support and positive energy made the day a great success. Special thanks to our management for making this event possible.

Let's keep making greener choices, not just in fashion, but in everything we do for a better, more sustainable future.



Dharmesh Chudasama  
Trainer/Assessor

## *DEDICATED SECTION TO ASLI 'S SHINING STARS*



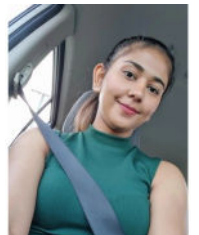
### My Journey from Fiji to ASLI College

My name is Avintika Darshani, and I am 23 years old. I come from Fiji, a beautiful island nation in the South Pacific. I feel incredibly fortunate to have the opportunity to pursue my studies at the Australian Study Link Institute. This experience has been a life-changing journey, and I am immensely grateful to the institution for providing me with the platform to further my education and explore new possibilities.

Studying in Australia has allowed me to experience a whole new world of academic and cultural diversity. It has broadened my knowledge, challenged my perspectives, and encouraged me to step out of my comfort zone. The opportunity to learn from experienced trainers and engage with a multicultural student body has significantly contributed to my personal and professional growth.

I would also like to extend my gratitude to the entire staff and faculty at Australian Study Link Institute. Their unwavering support, guidance, and encouragement have made my experience here both enriching and fulfilling. From the moment I arrived, I have felt welcomed and supported, which has made it easier for me to adjust and thrive in this new environment.

As I continue my studies, I am grateful for the experiences I have gained and the lessons I have learned. I look forward to utilising the knowledge and skills acquired here to make a positive impact in the future. Once again, thank you to Australian Study Link Institute for this incredible opportunity.



Avintika Darshani  
Student at ASLI