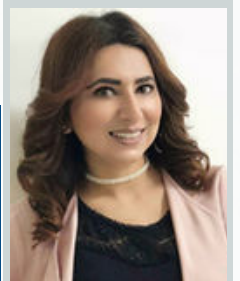




SECURE YOUR TICKETS TODAY...

LAST CHANCE TO ATTEND THE GRADUATION CEREMONY



By: Roopsirat K Sekhon
Campus Manager

This month was excitingly busy for several important reasons including orientation and WBT induction week. As you all know ASLI offers monthly intakes commencing the 15th of each month. Following the same, we welcomed a good number of new students this month not only in our popular commercial cookery and hospitality courses but also in Graduate Diploma of Management (learning) We always feel honored to see that our students have remained, positive and resilient, caring for one another and focusing on their studies throughout their education journey. Last week we saw our students showing a

great example of focusing on their studies by attending a WBT (Work-based training) induction week. The term work placement is used to describe a type of placement or experience in the workplace that formally contributes to the assessment process. This WBT session was arranged for the relevant group's commercial cookery students delivered by our qualified trainers explaining the work placement as part of their overall assessment.

We would like to say thank you to you all for your overwhelming support of our college over the last few years is truly appreciated



One day left to buy your ticket for Graduation Ceremony

IMPORTANT DATES FOR YOUR DIARY

- August
 - 12: Orientation Day for August 2022 Intake
 - 15: September intake start date
 - Monthly tuition fees due date
 - 25: Thursday 1pm to 5pm Graduation Day

Graduation FAQ

- **I have only completed one course at ASLI, am I eligible for graduation?**
Yes, you are eligible if you have successfully completed your course by meeting all the course requirements.
- **Do I have to pay anything extra to cover the graduation uniform cost apart from my registration fee?**
No, this is already covered in the cost.
- **Will I receive any certification?**
Yes, you will receive an achievement award.
- **If I am unsure whom should I contact?**
Please contact our staff on 0480 296 757 via text or call.

EXCURSION DAYS ARE BACK

By: Gulbeen Dhillon
Training Manager



Dear Students,
You are extremely happy to announce that finally, excursion days are back. We are encouraging our current commercial cookery, leadership & management students to attend an excursion. arranged by Fine Food Australia Showcasing the latest innovations in food, beverages, and equipment. If you thirst for an edge this is where you'll hear it first. Food industry leaders and successful operators deliver practical solutions to challenging business issues ranging from staffing to profitability. Insights into the changing consumer demands affecting Australia's food industry trends are also sure to stir your thinking. Details of the venue and timing are listed below.

Day, Date & Time: Monday, 5th September 2022 at 10 am

Venue: Melbourne Convention & Exhibition Centre, 1 Convention Centre Pl, South Wharf VIC 3006

Registration closing date: Friday 26th August 2022 by 5:00 PM

Please complete an excursion registration form available at reception available until 26th August 2022 by 5:00 PM For further information, contact our staff at sso@asli.vic.edu.au